

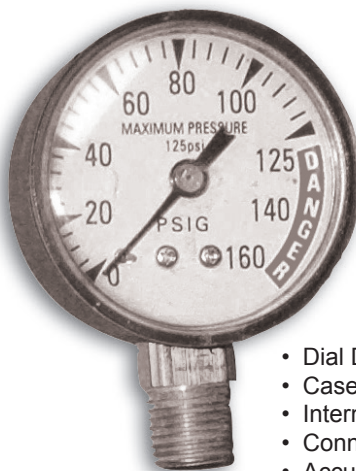


# Air Tank Pressure Gauge

## Operating Instructions & Parts Manual

for Pro-Lift Products Air Tank W-1010A & W-1005

Model  
W-4528



- Dial Diameter: 53mm
- Case Materials: Plastic
- Internal Materials: Tin Bronze + 201 Stainless Steel
- Connection (NPT): 1/4"
- Accuracy: Level 2.5
- Max Pressure: 125 PSI



*This is the safety alert symbol. It is used to alert you to potential personal injury hazards. Obey all safety messages that follow this symbol to avoid possible injury or property damage.*

### **! CAUTION**

- Do not use if there are broken, bent, cracked or damaged areas found on the gauge.

### **! WARNING**

- Do not exceed 125 psi, tank pressure of 85 -100 psi is recommended
- To prevent personal injury and/or property damage, release all pressure from the tank before removing or replacing air tank manifold